



COMPONENTS FOR CARDAN SHAFT BUILT IN STEEL AND NODULAR IRON

- INTERNATIONAL • FREIGHTLINER • KENWORTH • PETERBILT
- SCANIA • VOLVO • MACK • FORD • MAN



CATALOGUE2021
reiautoparts.com.br

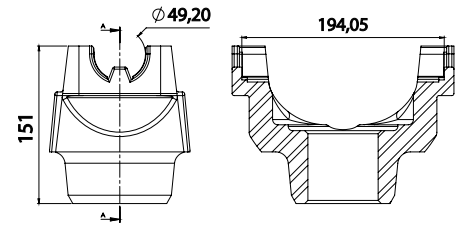


End yoke gear EATON FULLER RT8908LL
RT16918

(54 Spline - thread 1/2")
Peterbilt - International - 9800 - 9800I

Universal joint: 5-510X / 5-676X

Replace: 6-5.4-4631-1



S-330

Steel

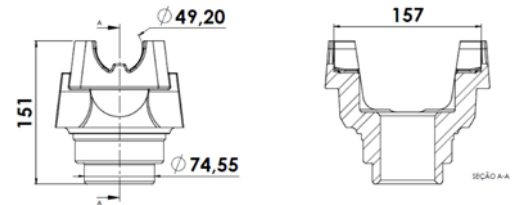


End yoke gear EATON FULLER

(10 Spline - thread 1/2")
International 4900

Universal joint: 5-515XS

Replace: 086749



S-360

Steel

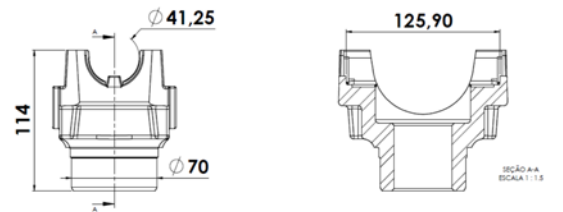


End yoke gear Eaton

(38 spline - thread 3/8")
International 4700 - S4700 - Mid Bus

Universal joint: SPL90-1XS

Replace: 5505529



S-371

Steel

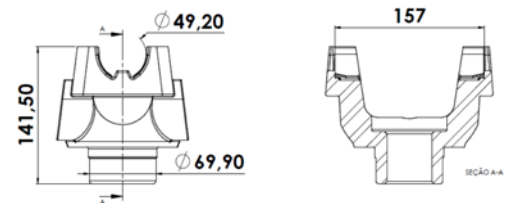


End yoke gear Eaton FS5106 - FS5205
FS6406A

(38 spline - thread 1/2")
International 4700 - S4700 - Durastar
Freightliner

Universal joint: 5-515XS

Replace: 086746



S-638

Steel

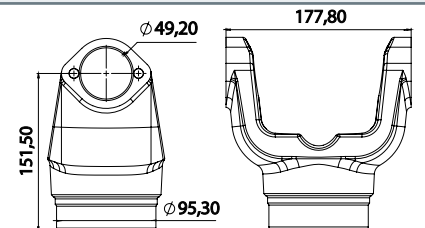


End yoke gear Eaton 12515 / 14615 / 14715

(10 spline)
International - Freightliner

Universal joint: 5-407X - 5-676X

Replace: 6-3-4-791-X - **DUST COVER**



S-664

Steel

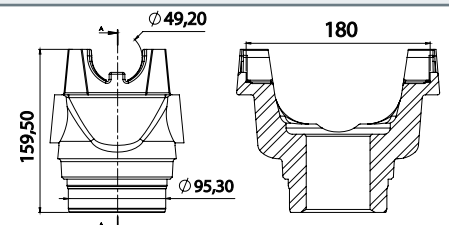


End yoke gear Eaton 12515 / 14615 / 14715

(10 spline - thread 1/2")
International - Freightliner

Universal joint: 5-677X

Replace: 6-3-4-791-1X



S-679

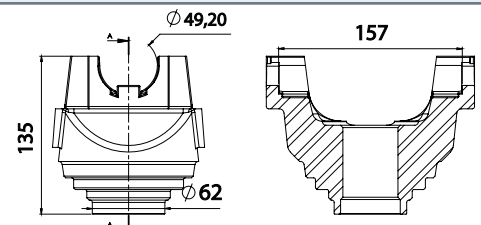
Steel



End yoke central
(Thread 1/2" - 38 spline)

International 4700 - 4900 - P900 - CNT900
DT466 - Kodiak - Freightliner Columbia
GMC Brigadier - Business Class M2 - Mack.

Replace: 6-4-7141-1
Universal joint: 5-515X
Assembly: SP-3001 / SP-3028



S-333

Steel

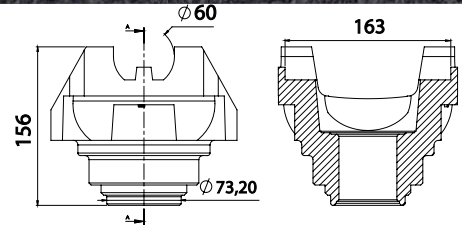


End yoke central
 (Thread M12 - 46 Spline)

International 7600 – International 9400I
 Kenworth T800 – Volvo Americano

Replace: 250-4-871-1 / 250-4-21-1

Universal joint: **SPL 250 X**
 Assembly: **SP-3011**



S-334

Steel

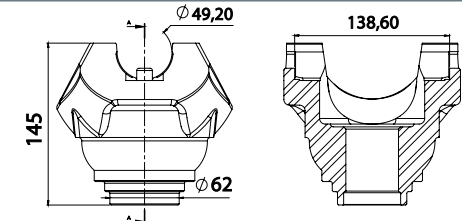


End yoke central
 (Thread M12 - 38 spline)

International 4400 - Durastar 4x2

Replace: 140-4-1381-1

Universal joint: **SPL 140X**
 Assembly: **SP-3002**



S-336

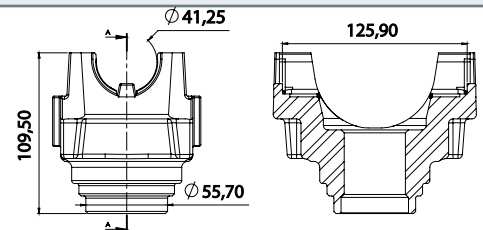
Steel



End yoke central
 (Thread 3/8" - 34 spline)

Ford 750 XL Super Duty Longo
 International 4300

Replace: 90-4-11-1
Universal joint: **SPL 90-1X**
 Assembly: **SP-3004 / SC-10346**



S-351

Steel

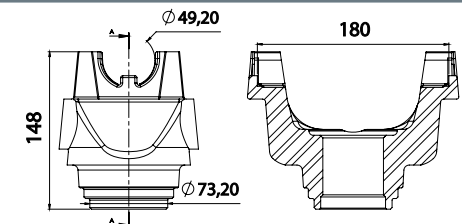


End yoke central
 (Thread 1/2" - 46 spline)

International 9200 - Volvo White – Kodiak
 Navistar 4700 - Mack RD - DM Granite

Replace: 6-3-4-821-1

Universal joint: **5-677X**



S-614

Steel

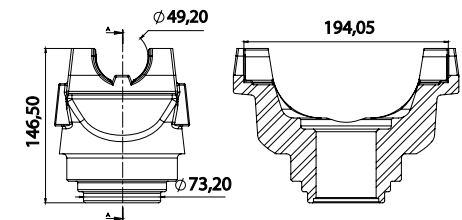


End yoke central
 (Thread 1/2" - 46 spline)

International 9400 – International 9800
 Freightliner - Volvo - Mack Granite - Kenworth
 T800 - T900 - GMC Super Brigadier

Replace: 6-5-4-3591-1

Universal joint: **5-281X / 5-676X**



S-678

Steel

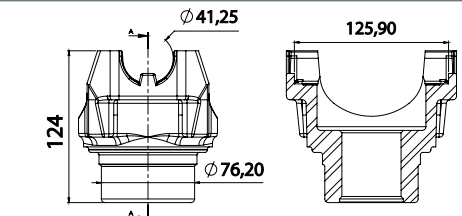


End yoke differential Rockwell
 (Thread 3/8" - 39 Spline)

Ford 750 XL Super Duty Longo - International 4300

Replace: 90-4-311-1 / 90-4-321-1X - **DUST COVER**

Universal joint: **SPL 90 1X / SPL 100-1X**



S-363

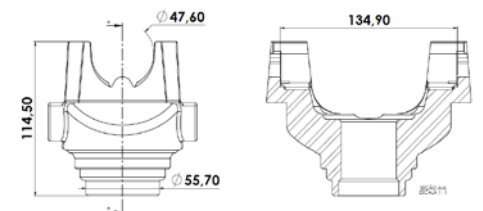
Steel



End yoke central
 (Thread 3/8" - 34 spline)

Kodiak - Dodge P900 - Mack - Ford - F700 (189")
 F700 (237") - B800 (237") - B800 (189") - B800
 Kodiak WB-211" - C-70 STD - Kodiak WB-157" - C-70 STD
 P-70 Diesel 241" - P-70 Diesel 211" - Kenworth - T-300
 Camiones Classe 6

Replace: 5-4-7171-1
Universal joint: **5-438X / 5-674X**
 Assembly: **SP-3004 - SC-10343**



S-301

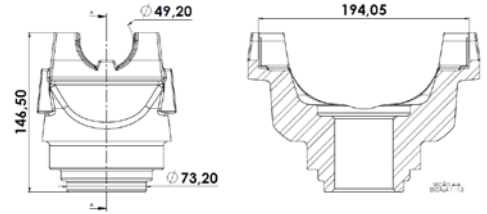
Steel



End yoke central
 (Thread 1/2" - 16 Spline)

Kenworth - T-450 Tractocamión
 T-800 - Tractocamión

Replace: 6-5-4-1891-1
Universal joint : 5-510 X / 5-676X
Assembly: SP-3014 - SP-3019 - SC-10344



S-375

Steel



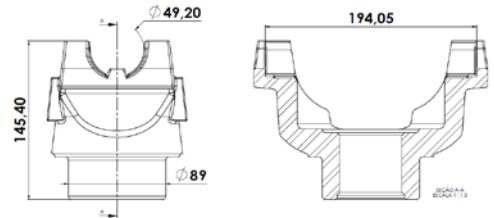
End yoke differential **Meritor**
 (Thread 1/2" - 46 spline)

Kenworth T-800

Replace: 6-5-4-4271X

Universal joint : 5-510X

Assembly: SC-10344



S-841

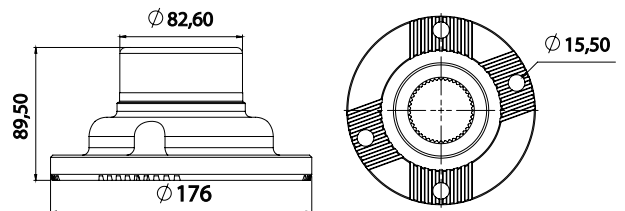
Steel



Companion flange differential **Meritor**
 (46 spline)

International 4400

Replace: 070619 - **DUST COVER**



S-345

Steel

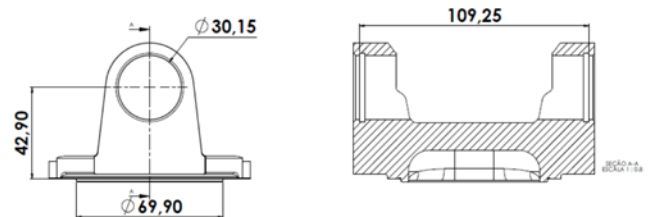


Flange Yoke

D600 - ACD900 - RAM6500

Replace: 3-2-159

Universal joint : 5-160XS



S-130

Nodular

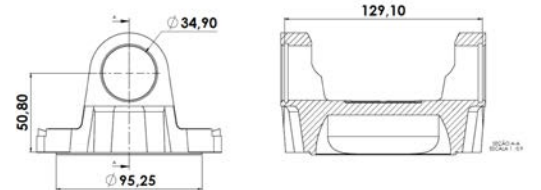


Flange Yoke

D600 - ACD900 - DCD900 - RAM 6500

Replace: 4-2-669

Universal joint : 5-275XS



S-131

Nodular

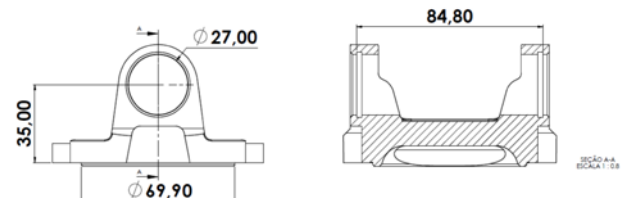


Flange Yoke

Toyota 3.8 - F250 - F350 - T300 - D100
 D1500 - D150

Replace: 2-2-479

Universal joint : 5-153XS



S-133

Nodular

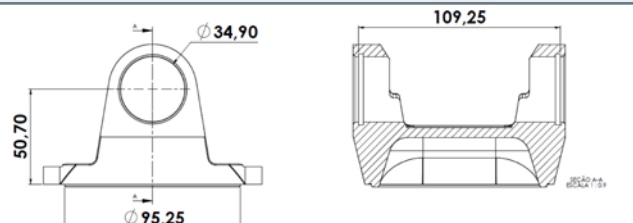


Flange Yoke

B60 - B70 - D600 - D250 - D350
 RAM2500 - RAM3500

Replace: 3-2-479

Universal joint : 5-263XS



S-135

Nodular

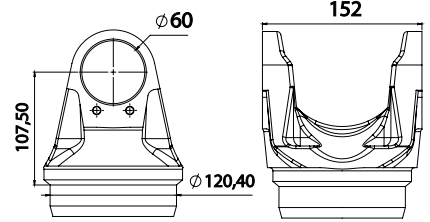


Weld yoke

International 7600 – International 9400I
 Kenworth T800 – Volvo Americano

Replace: 250-28-17 / 50-10-143

Universal joint: **SPL 250 X**



S-308

Steel

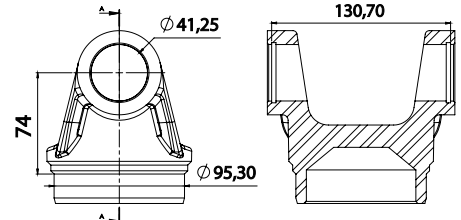


Weld yoke

Ford 750 XL Super Duty Longo
 International 4300 - 4700

Replace: 90-28-27

Universal joint: **SPL 90-1X**



S-311

Steel

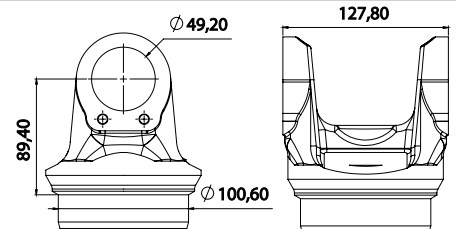


Weld yoke

International 4400 - Durastar 4x2

Replace: 140-28-17

Universal joint: **SPL 140 X**



S-342

Steel

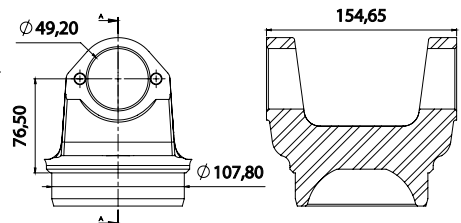


Weld yoke

International 4700 – 4900 - 9200 – 9800 – Works Star.
 Freightliner Columbia – Century Class – FL70 – Classic XL.
 Ford 8000 – 750XL Super Duty.
 Mack RD6885 – RD6905
 Peterbilt – GMC – Detroit Série 90

Replace: 6-28-407

Universal joint: **5-515X**



S-366

Steel

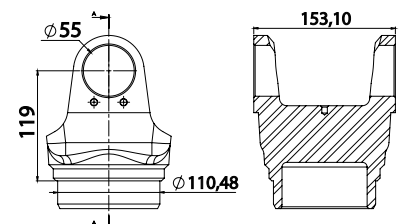


Weld yoke

International 7600 – International 90S960
 International 9400I – Durastar 6x4
 Volvo Americano

Replace: 170-28-27

Universal joint: **SPL 170X**



S-368

Steel

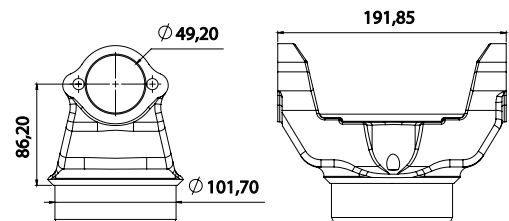


Weld yoke

International 9200 – 9800
 Kenworth T300 – T450 – T800
 Mack Vision – GMC Super Brigadier

Replace: 6-5-28-127

Universal joint: **5-281X**



S-422

Steel

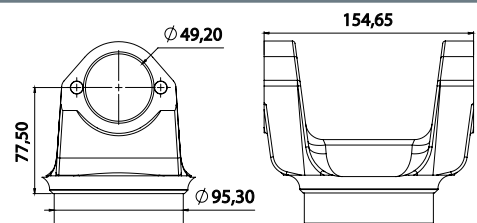


Weld yoke

International 4900 – International DT466
 Freightliner Columbia - Brigadier J900
 Mack Vision - Kodiak 467

Replace: 6-28-347

Universal joint: **5-515X**



S-627

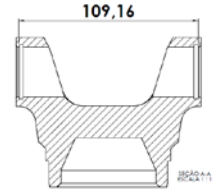
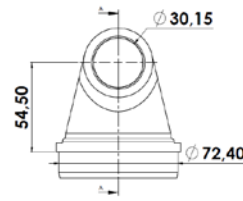
Steel



Weld yoke

Isuzu NPR / Iveco / C30 / P30 / C10 / F600
T45 / Ram 6500 / Ford - F700 (157")
F700 (189") / F780 (237)

Replace: 3-28-97
Universal joint: 5-160X



S-382

Steel

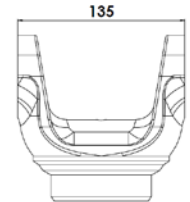
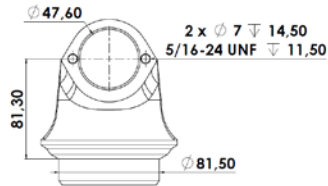


Weld yoke

Encava / Kodiak 209"-156" / Mack / Kodiak
WB-211", C-70 / Kodiak WB-157", C-70
STD / P-70 Diesel 241" / P-70 Diesel 211"

Replace: 5-28-627 / 5-28-717

Universal joint: 5-438X



S-318

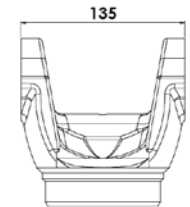
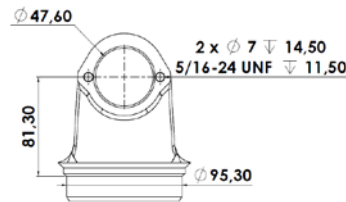
Steel



Weld yoke

CHR 7.2 / LT500 / FORD - F700 (189")
F700 (237") / B800 (237") / B800 (189")
B800 / Kenworth - T-300 - Camiones Clase 6
Freightliner FL70

Replace: 5-28-327
Universal joint: 5-438X



S-309

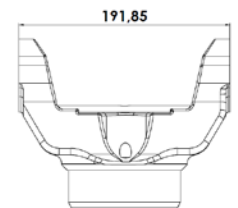
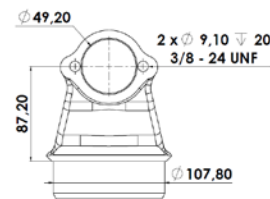
Steel



Weld yoke

Mack RD6885 - DM6905 - Vision
GMC Super Brigadier - International 8200
Kenworth Aero Cab - T300 - T450 - T800.
Ford Aero Max - LTL9000 - Hinday HD900.
Freightliner Columbia

Replace: 6-5-28-117X
Universal joint: 5-281X



S-423

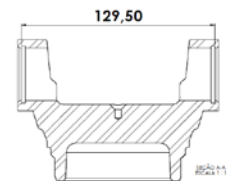
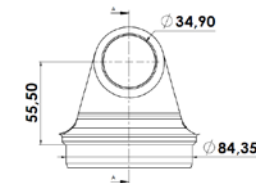
Steel



Weld yoke

Chrysler - B200 / B100 / Ram 2500 / Dina
Ford - F700 (157") / F700 (189") / F780 (237)
Kodiak WB-211", C-70 STD / Kodiak WB-157"
C-70 STD / P-70 Diesel 241" / P-70 Diesel 211"
Kodiak 228-229 / Navistar 4700 bus / Isuzu LT500

Replace: 4-28-307
Universal joint: 5-275X / SPL-70-1X



S-233

Steel

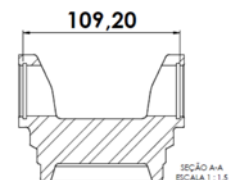
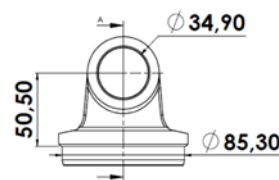


Weld yoke

Kodiak 209 - B60 - B70

Replace: 3-28-537

Universal joint: 5-263XS



S-716

Steel

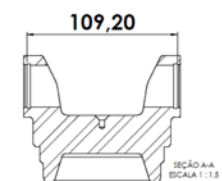
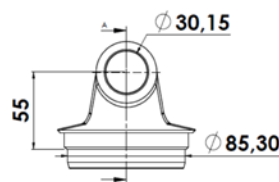


Weld yoke

Isuzu NPR microbus - Ford 600 - D600
F350

Replace: 3-28-557

Universal joint: 5-160XS



S-717

Steel

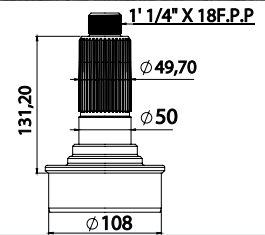


Midship stub (Thread 1 1/4" x 18F.P.P)
 (38 spline)

International DT466 - 4900

Replace: 6-53-421

Assembly: **S-333 / SC-10358**



SP-3001

Steel

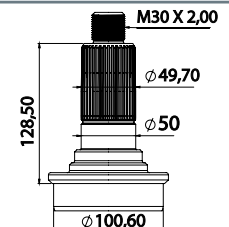


Midship stub (Thread M30 x 2,00)
 (38 spline Ø 50mm)

International 4400 - Durastar 4x2

Replace: 140-53-11

Assembly: **S-336 / SC-10410**



SP-3002

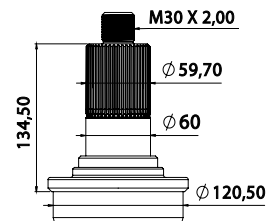
Steel



Midship stub (Thread M30 x 2,00)
 (46 Spline)

International 7600 - 9400I.
 Freightliner Century Class.
 Mack Granite - RD6885.
 Volvo Americano - Ford Aero Max

Replace: 250-53-11 / 50-101-41
 Assembly: **S-334 / SC-10410**



SP-3011

Steel

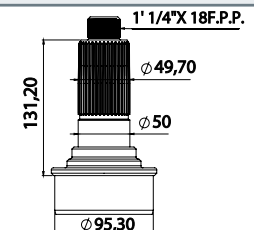


Midship stub (Thread 1 1/4" x 18F.P.P)
 (38 spline)

International 4900 - International DT466
 Freightliner Columbia - Freightliner FL 70

Replace: 6-53-411

Assembly: **S-333 / SC-10358**



SP-3028

Steel

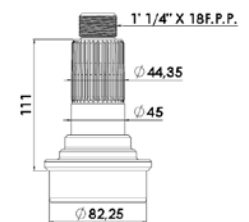


Midship stub (Thread 1 1/4" x 18.F.P.P)
 (34 spline)

International 4200 - Kodiak - Dodge P900
 Mack

Replace: 5-53-261

Assembly: **SC-10358**



SP-3032

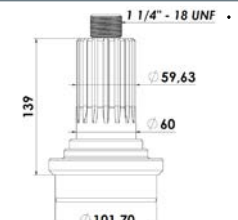
Steel



Midship stub (Thread 1 1/4" x 18.F.P.P.)
 (16 spline)

International 9200 - Tractor 9400.

Replace: 6-5-53-51
 Assembly: **S-375 / SC-10358**



SP-3014

Steel

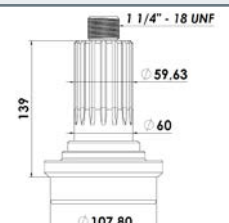


Midship stub (Thread 1 1/4" x 18.F.P.P.)
 (16 spline)

Kenworth T450 - T800.
 Mack Brigadier - GMC Super Brigadier.
 Volvo Americano

Replace: 6-5-53-91

Assembly: **S-375 / SC-10358**



SP-3019

Steel

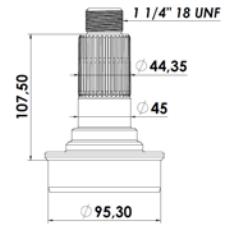


Midship stub (Thread 1 1/4" x 18F.P.P)
 (34 spline)

Kenworth T300 - International 4300

Replace: 90-53-11

Assembly: **S-301 / SC-10358 / S-351**



SP-3004

Steel

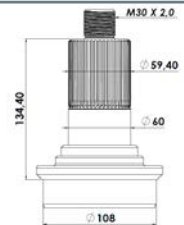


Midship stub (Thread M30 x 2,0)
 (46 spline)

Freightliner - Kenworth T800
 Kenworth T900 - Super Brigadier
 Volvo - Mack

Replace: 6-5-53-171

Assembly: **S-304 / S-334**



SP-3045

Steel

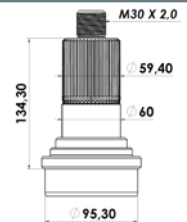


Slip stub (Thread M30 x 2,0)
 (46 spline)

Freightliner Century Classis.
 Navistar.
 Mack RD6885 - GMC Super Brigadier.
 Ford Aero Max

Replace: 6-3-53-21

Assembly: **S-304 / S-334**



SP-3046

Steel

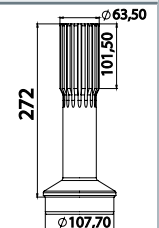


Slip stub (16 Spline)

International 4700 - 4900 - 9200 - 8200 - Works Star.
 Freightliner Columbia - Century Class XL - FL70 - Busines Class M2.
 Mack RD6885 - RD6905 - Volvo White.
 Ford 750 XL Super Duty - 8000 - LTL9000.
 Kenworth - GMC

Replace: 6-40-621

Assembly: **SP-3030 / SP-3022**



SP-3012

Steel

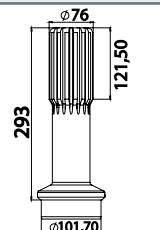


Slip stub (16 Spline Ø 76 mm)

International 8200 - 9200 - Works Star.
 Mack Granite - DM6905 - RD6885.
 Freightliner Columbia - Century Class.
 Kenworth Aero Cab
 Ford Aero Max - LTL9000 - Peterbilt - Hyundai HD900.

Replace: 8-40-101

Assembly: **SP-3018**



SP-3020

Steel

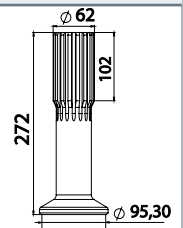


Slip stub (16 Spline)

International 4900 - Durastar - DT466.
 GMC Kodiak K156 - K190.
 Freightliner Columbia.
 Mack Vision - GMC Brigadier J900 - Volvo White K228

Replace: 6-40-521

Assembly: **SP-3030 / SP-3022**



SP-3029

Steel

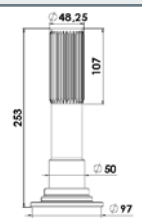


Slip stub with bearing track
 (30 Spline)

International 4200 - 4300

Replace: 90-53-21

Assembly: **SP-3033**



SP-3034

Steel

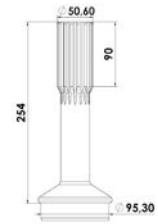


Slip stub
 (16 spline)

GMC Kodiak WB211 – WB157– C60 – C70.
 Ford B800 – Freightliner FL70.

Replace: 5-40-1051

Assembly: **SP-3008 / SP-3050**



SP-3009

Steel

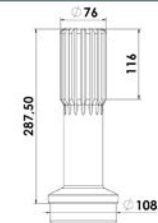


Slip stub
 (16 spline)

Dina 6510J1 – 6510J2 – 6512J – 74310 – 74000 – 74300 – 94370.
 Mack Vision – GMC Super Brigadier J900.

Replace: 6-5-40-191

Assembly: **SP-3018**



SP-3013

Steel

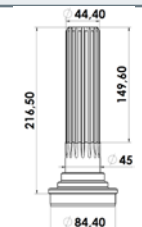


Slip stub with bearing track
 (16 spline)

Ford F700 – F780
 Kodiak WB157 – D600 – RAM6500

Replace: 4-53-61

Assembly: **SP-3039**



SP-3041

Steel

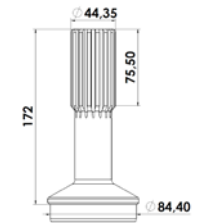


Slip stub
 (16 spline)

Navistar 4700 - International bus - F350, B600 - F700

Replace: 4-40-761

Assembly: **SP-3038**



SP-3040

Steel

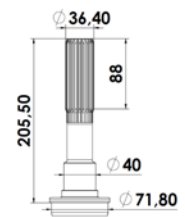


Slip stub with bearing track
 (22 spline)

Isuzu NPR 700P

Replace: 3-53-2401

Assembly: **SP-3061**



SP-3054

Steel

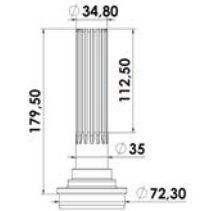


Slip stub with bearing track
 (16 spline)

Ford 350 – 600

Replace: 3-53-1371

Assembly: **SP-3062**



SP-3055

Steel

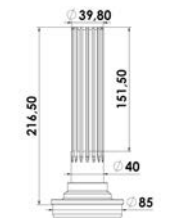


Slip stub with bearing track
 (16 spline)

B60 – C70 – D600 – F600

Replace: 3-53-451

Assembly: **SP-3071**



SP-3058

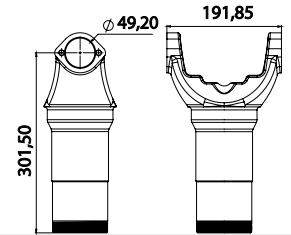
Steel



Slip yoke (16 spline)

Mack Vision – Mack Granite – RD6885 – DM6905.
GMC Super Brigadier - International Works Star – 8200.
Ford LTL9000 – Aero Max.
Kenworth Aero Cab – Hyndai HD900.

Universal joint: 5-281 X
Replace: 6-5-3-1371 KX
Assembly: SP-3020 / SP-3013



Steel

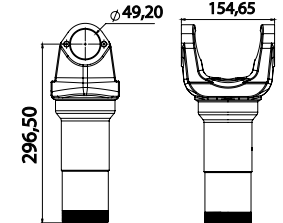
SP-3018



Slip yoke (16 spline)

International Works Star – 8200 - Freightliner Columbia
Century Class – Classic XL – Businnes Class M2.
Mack RD6885 – Vision – RD6905.
GMC Brigadier J900 – Ford 8000 – LTL9000 – Peterbilt – Volvo White.

Replace: 6-3-2651 KX
Universal joint 5-515X
Assembly: SP-3012 / SP-3029



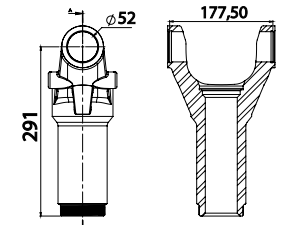
Steel

SP-3022



Slip yoke (16 spline)

Freightliner Columbia
Replace: 20RLS4011A / 20RLS4011A1S
Assembly: SP-3012 / SP-3029



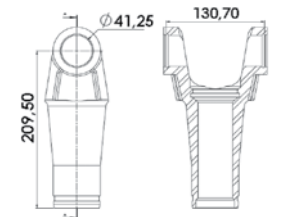
Steel

SP-3030



Slip yoke (30 spline)

International 4200 - 4300
Universal joint: SPL-90-1X
Replace: 90-3-41X
Assembly: SP-3034



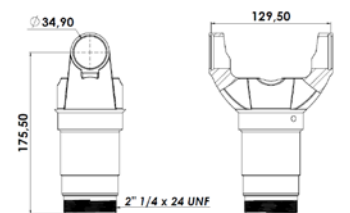
Steel

SP-3033



Slip yoke (16 spline)

Ford F700 – F780.
GMC Kodiak WB157 - WB211 – C70.
International 4700 – Bus.
Replace: 4-3-1241KXS
Universal joint: 5-275X / SPL-70-1X
Assembly: SP-3041



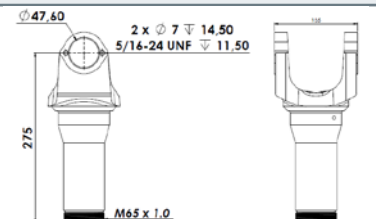
Nodular

SP-3039



Slip yoke
(16 spline)

GMC Kodiak WB157 – WB211 – C60 – C70.
Mack – Ford B800 – Freightliner FL70
Replace: 5-3-2261KX
Universal joint: 5-438X
Assembly: SP-3009 / SP-3010



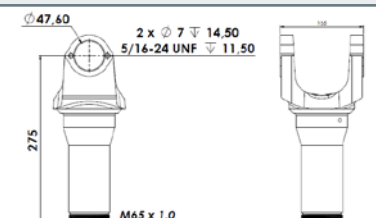
Steel

SP-3008



Slip yoke (16 spline)

GMC Kodiak WB157 – WB211 – C60 – C70.
Mack – Ford B800 – Freightliner FL70
Replace: 5-3-2261KX / SP-3008
Universal joint: 5-438X
Assembly: SP-3009 / SP-3010

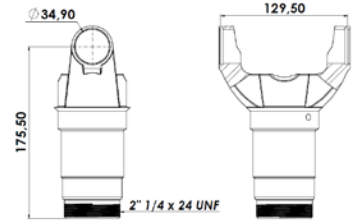


Nodular

SP-3050



Slip yoke (16 spline)
 Navistar 4700 - International bus - F350,
 B600 - F700
Replace: 4-3-1241KX1
 Assembly: **SP-3040**
Universal joint: 5-275X / SPL-70-1X

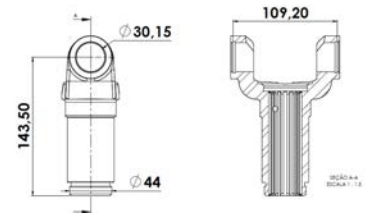


SP-3038

Nodular



Slip yoke (16 spline)
 F600 - D600
Replace: 3-3-1481KX
Universal joint: 5-160XS

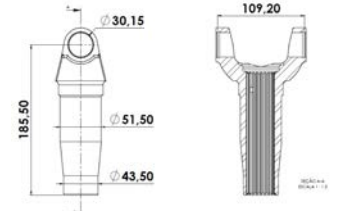


SP-3059

Nodular



Slip yoke (21 spline)
 Isuzu NPR 2011
Replace: 3-3-6571X
 Assembly: **SP-3054**
Universal joint: SPL-361X / 5-641X

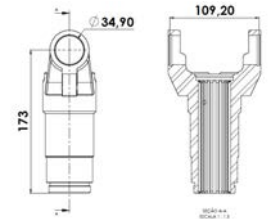


SP-3061

Nodular



Slip yoke (16 spline)
 B60 - B70 - D600
Replace: 3-3-1601KX1
Universal joint: SPL-361X / 5-641X

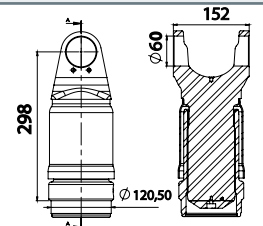


SP-3069

Nodular



Sleeve and stub (38 spline)
 (With dust cover and grease nipple)
 International 7600 - 94001 - Durastar 6X4.
 Kenworth - Volvo Americano
Replace: 58-00310041X
Universal joint : SPL 250X

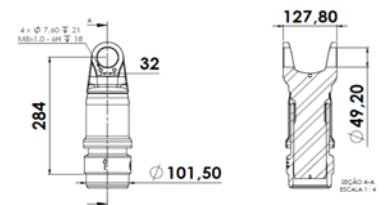


S-620

Steel



Sleeve and stub (30 spline)
 (With dust cover and grease nipple)
 International - Durastar 4X2
Replace: 58-00800031X
Universal joint : SPL 140X

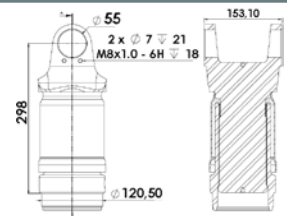


S-621

Steel



Sleeve and stub
 (38 spline)
 Kenworth T800 - Kenworth T370
 International 7600
Universal joint: SPL-170X

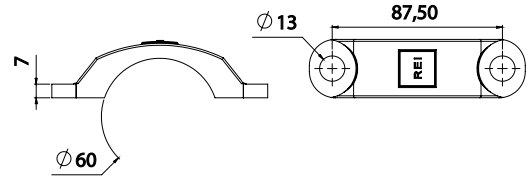


S-803

Steel



Fix kit with screw M12
International 7600 – 9400I.
Kenworth T800 – Volvo Americano.
Replace: 250-70-18X
Assembly: S-334
Universal joint : SPL 250 X

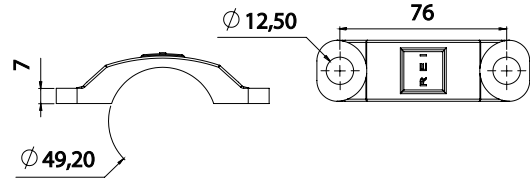


S-303

Steel



Fix kit with screw M12
Kenworth
Replace: 140-70-18X
Assembly: S-336
Universal joint: SPL 140X



S-343

Steel



Fix kit with screw 1/2" X 1"
International 7600 – International 9400I
Kenworth – Volvo
Universal joint: 5-515X
Assembly: S-333 / S-330
Original Model

SC-10344

Steel



Fix kit with screw 3/8" X 3/4" - F.P.P.
Ford 750 XL Super Duty Longo
International
Assembly: S-351 / S-363
Universal joint: SPL 90-1X
Original Model

SC-10346

Steel



Fix kit with screw 3/8" X 3/4" - F.P.P.
Kodiak - Dodge P900 - Mack - FORD - F700 (189")
F700 (237") - B800 (237") - B800 (189") - B800
KODIAK WB-211" - C-70 STD - KODIAK WB-157" - C-70 STD
P-70 DIESEL 241" - P-70 DIESEL 211" - Kenworth - T-300 CAMIONES CLASE 6
Assembly: S-301
Universal joint: 5-438X
Original Model

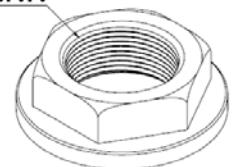
SC-10343

Steel



Nut
Thread 1 1/4" x 18 F.P.P.
Assembly: SP-3001 / SP-3032 / SP-3028
SP-3032 / SP-3014 / SP-3019 / SP-3004

1" 1/4"x18 F.P.P.



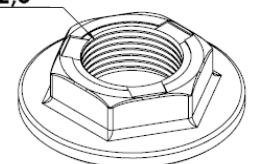
SC-10358

Steel



Nut
Thread M30x2,00
Assembly: SP-3011 / SP-3002 / SP-3045
SP-3046
Replace: 250-74-11

M30 x 2,0



SC-10410

Steel

TRANSMISSION COMPLETE CARDAN - TRUCK 6X4

Replace: 2RR.521.127A

VW 31.260

Ford Cargo 2623

Universal joint: 5-279X



Closed center to center length of the Universal joints: 495mm



Steel

VOLKSWAGEN MAN / FORD

SK-001

TRANSMISSION COMPLETE CARDAN - TRUCK 6X4

VW 26.260E

Ford Cargo 2626 - 2628E

Universal joint: 5-279X



Closed center to center length of the Universal joints: 560mm



Steel

VOLKSWAGEN MAN / FORD

SK-002

TRANSMISSION COMPLETE CARDAN - TRUCK 6X4

Iveco Tector 260E 28

Universal joint: 5-279X



Closed center to center length of the Universal joints: 595mm



Steel

IVECO

SK-003

TRANSMISSION COMPLETE CARDAN - TRUCK 6X4

Scania Series 4 e 5

Universal joint: 5-12072X



Closed length from flange to flange: 678mm



Steel

SCANIA

SK-004

TRANSMISSION COMPLETE CARDAN - TRUCK 6X4

Replace: 2V5.521.110

Universal joint: CZ 286



Closed length from flange to flange: 670,50



Steel

VOLKSWAGEN MAN

SK-006

Scania Series 4 e 5

SLEEVE AND STUB - TRUCK 6X4 - 24 Spline

Universal joints not included

Closed length from flange to flange: 678mm



Steel

SCANIA

S-454

COMPANION FLANGE - TRUCK 6X4 FOR ORIGINAL SLIDE SYSTEM OPERATION

Scania Series 4 e 5

Universal joints not included

Desenho ilustrativo. Não incluso no Kit.



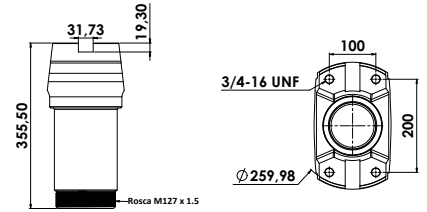
Steel

SCANIA

S-216



Slip yoke Series 15C
 (38 spline)
 Caterpillar
 Assembly: **S-151 / S-157**
Universal joint: 5-15211X

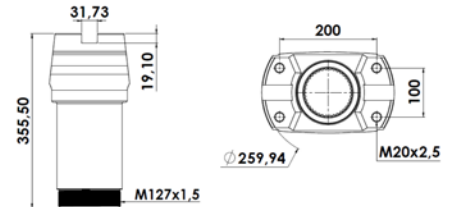


S-150

Steel



Slip yoke Series 15C
 (38 spline)
 Caterpillar
 Assembly: **S-151 / S-864**
Universal joint: 5-15211X

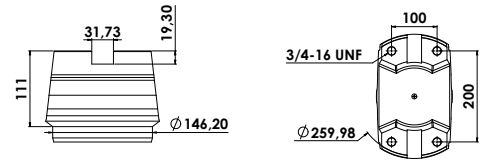


S-863

Steel



Weld yoke Series 15C
 Caterpillar
Universal joint: 5-15211X
 Assembly: **S-150 / S-151**

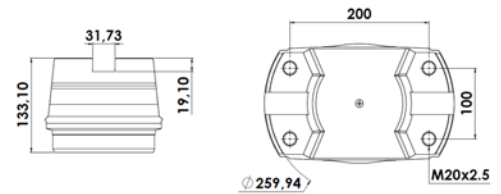


S-157

Steel



Weld yoke Series 15C
 Caterpillar
Universal joint: 5-15211X
 Assembly: **S-151 / S-863**

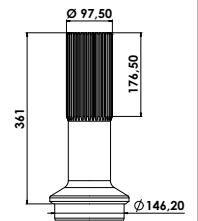


S-864

Steel



Slip stub Series 15C
 (38 spline)
 Caterpillar
 Assembly: **S-150 / S-157**

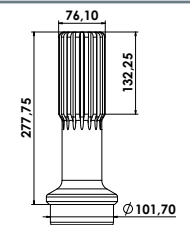


S-151

Steel



Slip stub Series 9C
 (16 spline)
 Caterpillar
 Assembly: **S-152 / S-153**

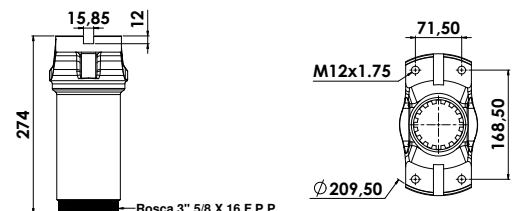


S-154

Steel



Slip yoke Series 9C
 (16 spline)
 Caterpillar
 Assembly: **S-152 / S-154**
Universal joint: 5-9001X / 5-9016X



S-153

Steel

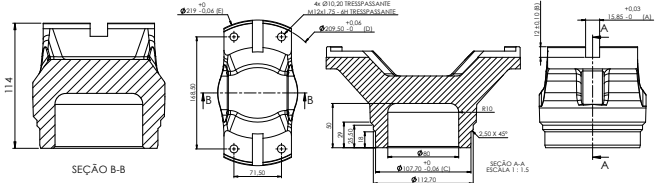


Weld yoke Series 9C

Caterpillar

Universal joint: 5-9001X / 5-9016X

Assembly: **S-153 / S-154**



S-152

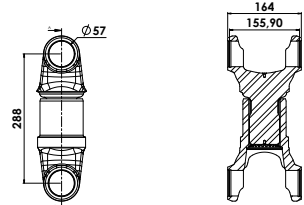
Steel



Sleeve and Yoke
(26 spline)

Volvo

Universal joint: 5-12932X



S-163

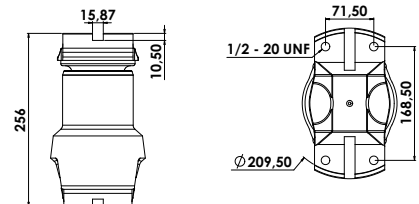
Steel



Sleeve and Yoke Series 9C
(32 spline)

Caterpillar
Volvo: A35C - A35E - A35F - A35G - A40D
A40E - A40F - A40G

Replace: 15.013.308



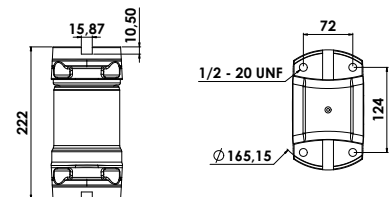
S-190

Steel



Sleeve and Yoke Series 8.5
(30 spline)

Caterpillar: 953 - R1300 - R1300G
R1300GII
Volvo: A30F - A25E - A25F - A30E - A25D
A30C - A25G



S-191

Steel

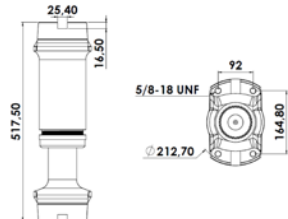


Sleeve and Yoke Series 10C
(32 spline)

Caterpillar - R1700

Replace: 2755526

Universal joint : 8V1540



S-159

Steel

**DESENVOLVIMENTO
DE PEÇAS ESPECIAIS**

**DEVELOPMENT OF
SPECIAL PARTS**

**DESARROLLO DE
PIEZAS ESPECIALES**



AGRICULTURE LINE

TRANSMISSION COMPLETE CARDAN

Replace: AL-117414

John Deere 7505

Universal joint: AL 160516



LENGTH OF A TOTAL FACE THE OTHER: 198mm

Steel

JOHN DEERE

SM-001

TRANSMISSION COMPLETE CARDAN

Replace: AL-164026

John Deere 7505

Universal joint: AL 160516



LENGTH OF A TOTAL FACE THE OTHER: 265MM

Steel

JOHN DEERE

SM-002

TRANSMISSION COMPLETE CARDAN

Replace: DQ-36562

John Deere 6300 - 6405
6415 - 6615 - 6600 - 7500

Universal joint: 5-178X / DQ
43000



LENGTH OF A TOTAL FACE THE OTHER: 325mm

Steel

JOHN DEERE

SM-003

TRANSMISSION COMPLETE CARDAN

Replace: DQ-44686

John Deere 6405 - 6605

Universal joint: 5-178X / DQ
43000



LENGTH OF A TOTAL FACE THE OTHER: 380mm

Steel

JOHN DEERE

SM-004



Certified in the NBR ISO 9001 standard, the Rei Autoparts guarantees the quality of its products and services.

Since its foundation, Rei Autoparts has improved its processes, focusing on continuous improvement through high investments in technology and human empowerment.

The manufacturing process has high precision equipment and qualified technical staff, ensuring the superior quality and standardization of its products.

It has a most modern steel casting in Brazil and in its process essential equipment for high productivity with quality assurance.

- Machining (CNC)
- Espectrometer
- Ultrasound
- Tridimensional
- Magan Flux Fluorescente
- Induction heat treatment

The Rei Autoparts invests in quality to bring you the best, always maintaining the standard of Rei quality, which the market has known and trusted for years.



MISSION

Seek excellence in company management to ensure customer satisfaction and other stakeholders



VALUES

- Social responsibility
- Improvement and innovation
- Commitment to the outcome
- Ethics, Honesty and Integrity



VIEW

Ensure the continuity of business management in order to comply with our policies and values.

QUALITY MANAGEMENT POLICY

MEET THE STAKEHOLDERS AND OTHER APPLICABLE REQUIREMENTS, IN ORDER TO SATISFY CUSTOMERS.

SEEK PROFITABILITY AND BUSINESS CONTINUITY THROUGH ACTIONS THAT MAKE THE ORGANIZATION STRONG AND COMPETITIVE.

TO PROMOTE THE PROFESSIONAL GROWTH AND THE MAINTENANCE OF A SAFE WORK ENVIRONMENT AND RESPECT TO THE HUMAN BEING.

www.reiautoparts.com.br



Download install on your computer and gain speed in your search.

The interactive tool that facilitates the search of your products.

CATALOGUE MOBILE REI AUTO PARTS.

CARDANS COMPONENTES IN THE PALM OF YOUR HAND.
DOWNLOAD OUR APP.



TECHNOLOGY



REI

AUTO PARTS®

STEEL IN QUALITY



Ultrasound

Aiming at the future, we care about the environment, by strictly following all environmental regulations and norms, such as treatment of water effluents, solid, liquid and steam waste, as well as sanitary sewage. We also increased productivity, while improving life standards to all the staff involved in the production process.

With a pioneering leadership in the market, our company is continuously exploring new prospects for human and technological improvement. As a leading company in this field, we rely on extremely precise equipment, such as CNC lathes, spectrometers, ultrasound, three-dimensional gauge, induction heat treatment equipment, and the most modern foundry in Brazil, up to European standards.



Spectrometer

Three-dimensional



3D Gauge



Water effluents and sanitary sewage treatment unit

Induction heat treatment equipment



HOME A EMPRESA PRODUTOS DOWNLOADS REPRESENTANTES NOTÍCIAS CONTATO

ACCESS OUR SITE



www.reiautoparts.com.br



REI AUTO PARTS INDÚSTRIA E COMÉRCIO S/A
 Fone: (35) 3556-3900
 Estrada Vicinal Arceburgo/Milagre, S/Nº Km01
 Bairro: Trevo p/ Milagre Cep: 37820-000 Arceburgo MG
www.reiautoparts.com.br vendas@reiautoparts.com.br

EXPORT
 Phone: +55 16 3667.9400
export@suporterei.com.br

Indústria Brasileira

The images contained in this catalogue are meant just for illustrative purposes. Rei Auto Parts reserves the right to change technical specifications without prior notice.